

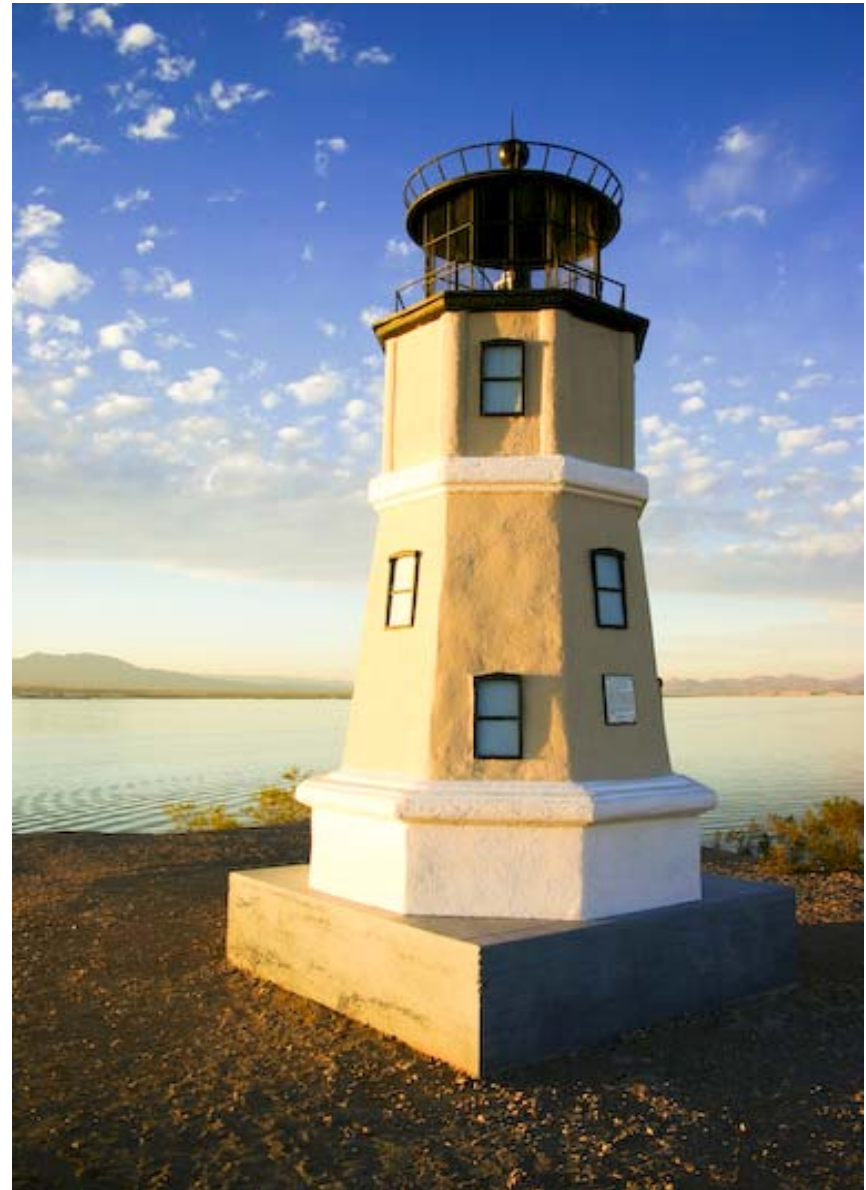
LAKE HAVASU CITY DEMOGRAPHICS



Partnership for Economic Development
314 London Bridge Road
Lake Havasu City, AZ 86403
Ph: (928) 505-7333
Fx: (928) 505-2095
www.lakehasvu.org

TABLE OF CONTENTS

History of Lake Havasu	3
Demographics.....	4-5
Taxes.....	6
Utilites	7
Transportation.....	8
Loan Programs.....	9
Education.....	10
Marine Industry.....	11
Main Street.....	12
Quality of Life.....	13
Contact Information.....	14



HISTORY OF LAKE HAVASU

Lake Havasu City, home of the historic London Bridge, is on the east shore of Lake Havasu on the Colorado River border of California and Arizona. McCulloch Properties, Inc. established the town in 1963 as a self sufficient, planned community. Lake Havasu is the major population center of southern Mohave County, one of the fastest growing counties in the United States. The population of Lake Havasu City in December 1975 was 15,500 and from the 2000 government census, it had increased to 41,938 and presently is above 55,000. Lake Havasu City was incorporated in 1978 and became a legal municipality in 1987.

In 1968, the London Bridge was purchased by Robert McCulloch, Sr. for the winning bid of \$2,460,000. McCulloch spent another \$7 million in moving the Bridge. The dismantled Bridge, once called the world's biggest jig-saw puzzle, was shipped 10,000 miles via cargo vessels across the ocean through the Panama Canal where it was stored in a seven-acre fenced storage compound. Reconstructing the London Bridge in Lake Havasu City was done in the same manner as the Egyptians built the pyramids. Sand mounds beneath each arch were carefully formed to the profile of the original bridge arches, serving the same function as molds. When work was completed, the sand was removed. A one-mile channel was dredged and water was diverted from the lake, under the Bridge, then back into the lake. At completion of the reconstruction, the peninsula known as Pittsburg Point became an island. The reconstructed London Bridge was dedicated in Lake Havasu City on October 10, 1971 with many British and Arizona officials participating in this event that drew 50,000 spectators.

Today, Lake Havasu and the Bridge attracts an estimated 2.5 million people and is Arizona's second highest visited historical tourist attraction (second to the Grand Canyon).



DEMOGRAPHICS

Population (2009 estimate)

Total Population	59,466
Age 0 - 4	4.70%
Age 5 - 9	4.60%
Age 10 - 14	5.50%
Age 15 - 19	5.40%
Age 20 - 24	4.70%
Age 25 - 34	10.80%
Age 35 - 44	10.60%
Age 45 - 54	12.50%
Age 55 - 64	14.00%
Age 65 - 74	13.80%
Age 75 - 84	9.80%
Age 85+	3.50%
Median Age	48.1

Major Employers

Lake Havasu Unified School District	670
Lake Havasu City	615
Havasu Regional Medical Center	615
Sterilite	425
Wal-Mart	300
Shugrue's Family of Restaurants	200
Bashas (2 locations)	186
London Bridge Resort	180
Mohave Community College	169
River Medical	150

Cost of Living (published January 2010)

	100% Composite Index
Lake Havasu City, AZ	109.7
Flagstaff, AZ	114.1
Phoenix, AZ	98.4
Prescott, AZ	105.3
Tucson, AZ	99.1
Yuma, AZ	103.2
Orange County, CA	146
Los Angeles/Long Beach, CA	141.6

Household Income (2009 estimate)

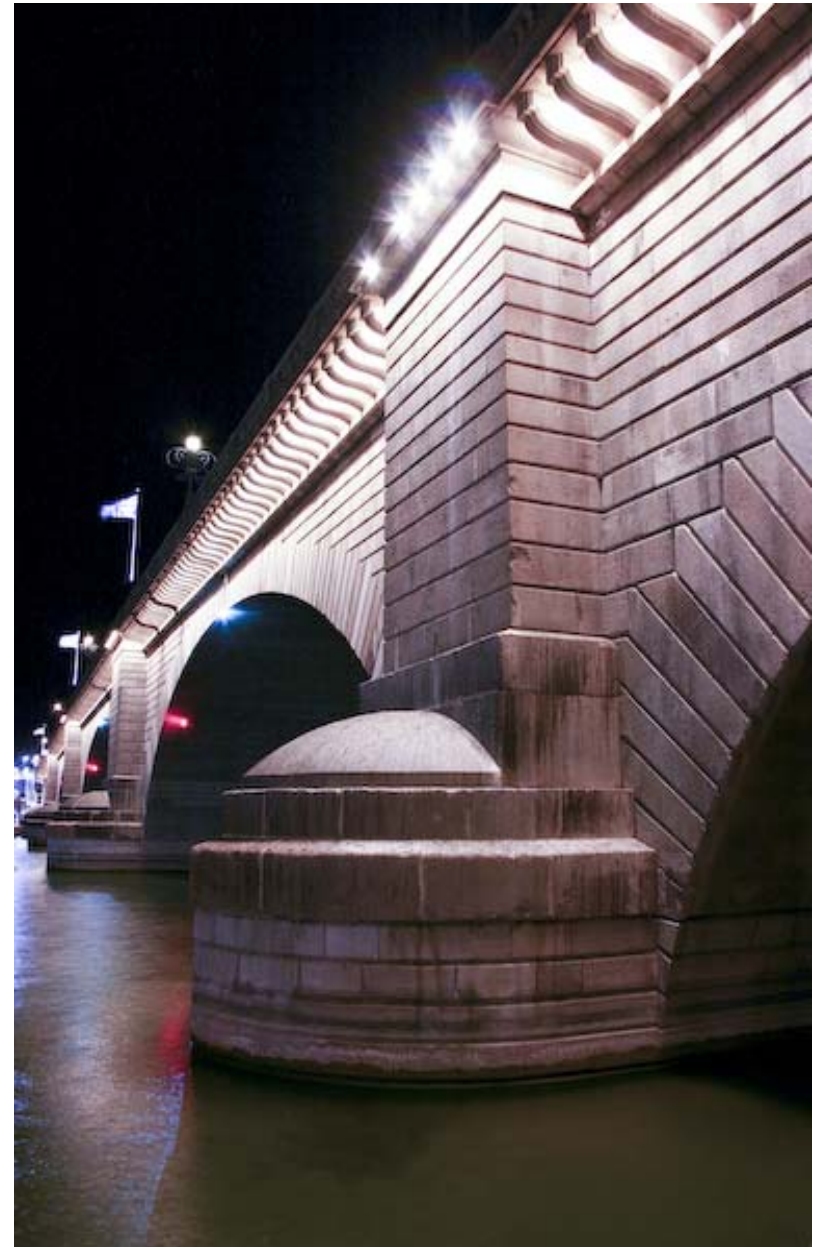
Income \$ 0 - \$9,999	5.70%
Income \$ 10,000 - \$14,999	4.90%
Income \$ 15,000 - \$24,999	13.10%
Income \$ 25,000 - \$34,999	14.50%
Income \$ 35,000 - \$49,999	19.30%
Income \$ 50,000 - \$74,999	20.20%
Income \$ 75,000 - \$99,999	9.70%
Income \$100,000 - \$124,999	5.60%
Income \$125,000 - \$149,999	3.10%
Income \$150,000 +	4.00%
Average Household Income	\$59,415
Median Household Income	\$43,989

DEMOGRAPHICS

2010 LABOR FORCE AND NONFARM EMPLOYMENT LAKE HAVASU CITY-KINGMAN METROPOLITAN AREA

	1st Quarter Average
Total Civilian Labor Force	92.3
Total Unemployment	10
Rate	10.80%
Rate (Sea. Adj.) *	10.60%
Total Employment	82.3
Total Nonfarm	46.3
Total Private	37.7
Goods Producing	5.4
Service-Providing	40.9
Private Service-Providing	32.3
Mining and Construction	2.6
Manufacturing	2.8
Trade, Transportation, and Utilities	10.6
Information	0.8
Financial Activities	1.7
Professional and Business Services	3.2
Educational and Health Services	8
Leisure and Hospitality	6.1
Other Services	2.1
Government	8.6
Federal Government	0.6
State and Local Government	8

(Retreived from AZDOC)



TAXES

State Corporate Tax Information (Arizona Department of Revenue)

Corporate income tax rate is 6.968 percent effective for taxable years beginning after December 31, 2000.

Payroll Tax Information

Payroll taxes in Arizona are computed on federal filing by employers and employees. Generally, withholdings for state payroll tax is between 10 and 32 percent of federal withholding based on employees' income.

Sales Tax Information

State	6.60%
Mohave County	0.25%
Lake Havasu City	2%
Transient Bed	3%
Restaurant and Bar	1%

State Compensation Fund

For Worker's Compensation Insurance Information:

7641 West Southern Avenue, Suite 205

Mesa, AZ 85210

Phone: 480.668.6200 or 1.800.419.3863

Fax: 480.668.6222

www.statefund.com

Mohave County Assessor's Office

This office is responsible for determining the value of property for taxation purposes.

Main Office

P.O. Box 7000

700 W. Beale Street

Kingman, AZ 86402-7000

928-753-0703 Phone



UTILITIES

Electrical Power

Electrical power is provided by UniSource Energy Services. Please go to UniSource's website for rates at <http://uesaz.com/home/programs/pricingplans/index.asp>. On UniSource's website you will be able to find current electric tariffs summarized on the Pricing Plan Summary (PPS-1). The details for different plans are also included on the site. In summary they include Small General Service (SGSMO) for the small commercial customers, Large General Service (LGS) for the medium sized customer and the Large Power Service (LPS) for our largest customers. The rates include pricing options to fit different customer needs such as time-of-use provisions. Clients with any questions or specific electric rate applications can contact Miles Willard at 928-505-7010 for gas questions contact Mike Roberts at 928-681-6515.

Municipal Water

Lake Havasu City 928-453-4146

Telephone Service

Frontier Communications	866-931-5256
Sprint	800-877-2000
Cingular/AT&T Wireless	800-934-3996



TRANSPORTATION

Interstate Highways

Lake Havasu City is 15 minutes from Interstate 40.

I40 provides access to major east & west coast markets, including Los Angeles, Long Beach, Las Vegas, Albuquerque, Phoenix, Tucson and parts of Mexico.

Approximate Driving Times From Havasu (Hours)

Las Vegas, NV	2.5
Mexico	2.5
Flagstaff, AZ	3
Phoenix, AZ	3.5
Los Angeles, CA	4.5
Tucson, AZ	4.5
San Diego, CA	5
Salt Lake City, UT	6.5
Albuquerque, NM	8.5



Comercial Flights

Lake Havasu City Municipal Airport is located 4 miles north of the city. At this time no commercial passenger company services this airport. The nearest airport with commercial flights is in Las Vegas, NV.

Runway: current length 8,000 ft.

Hangers: 79

LOAN PROGRAMS

SBA Loans

Small Business Administration (SBA) 504 Loan Program

The 504-loan program provides long term, fixed rate financing for businesses to purchase fixed assets such as land, building, machinery, and equipment. A certified development corporation makes the 504 loans, which are guaranteed by the SBA. The CDC can provide 40 percent of the loan project, a conventional lender or bank provides 50 percent of the loan project, and the business is required to provide at least a 10 percent equity contribution. The term of the loan is ten or twenty years. Interest rates vary. Small businesses and start-ups are eligible. The maximum loan amount is generally the lesser of \$750,000 (in some cases up to \$1,000,000) or 40 percent of the total project cost. For additional information contact the Business Development Finance Corporation (the CDC) at (800) 264-3377/ or 602-381-6293 or the SBA at 602-745-7200.

Small Business Administration 7A Loan Program

The 7A loan program provides financing to businesses for working capital, debt refinance and consolidation, and start-up financing. A conventional lender or bank issues the loan and the SBA guarantees up to 90 percent of the loan. The term of the loan is up to twenty-five years. The interest rate is 2.25 percent to 2.75 percent above the prime rate, depending on loan maturity. The break out point is 7 years. To qualify for a SBA 7A loan, a small business must demonstrate sufficient cash flow to repay debt, provide adequate collateral to secure the loan, and have satisfactory management expertise and commitment to a successful operation. The 7A guaranty maximum has been temporarily increased to \$1.5 million.

Small Business Administration Low Doc Program

Simplified and rapid loan process for loans \$5,000 to \$150,000. Small businesses and start-ups are eligible. Borrower negotiates terms. Interest rates depend on loan terms. For loans less than 7 years, maximum rate is 2.25 percent above prime. For loans 7 to 25 years, maximum rate is 2.75 percent above prime.

EDUCATION

Lake Havasu Unified School District

2200 Havasupai Blvd.
Lake Havasu City, AZ 86403
Phone: (928) 505-6925
www.havasuk12.az.us

- 1 - High School
- 6 - Elementry Schools
- 1 - Middle School

Lake Havasu Unified School District

100th day enrollment

Year	Enrollment
97-98	5260
98-99	5409
99-00	5494
00-01	5886
2-Jan	6180
3-Feb	6343
4-Mar	6561
5-Apr	6495
6-May	6531
7-Jun	6568
8-Jul	6276
9-Aug	6219
09-10**	6253

Mohave Community College

Lake Havasu City Campus
1977 Acoma Blvd. W.
Lake Havasu City, AZ 86403
Phone: (928) 855-7812
www.mohave.edu

Northern Arizona University (extended campus)

Mohave Community College
1977 West Acoma Building 1100
Lake Havasu City, AZ 86403
Phone (928) 505-3362
www.nau.edu



MARINE INDUSTRY

The economic activity generated from boater visitor spending impacts all industry and occupational groups in Lake Havasu City. Boating visitor spending supports over 4,600 jobs, generates more than \$105 million in income and adds over \$56 million in tax revenues.

Jet Ski World Finals

The IJSBA World Finals have been held every year since 1982 in Lake Havasu City. With an invitation-only policy attracting over 750 of the world's best personal watercraft racers, the World Finals have been the cornerstone of IJSBA racing. Racers from around the world make the pilgrimage to Lake Havasu City every October for the opportunity to make their mark on the international stage.

For more information visit www.ijasb.com



Lake Havasu Marine Association

Director: Jim Salscheider

Phone: (928) 208-2442

www.lhcma.com

Desert Storm

Desert Storm is an annual event where over 190 boats from around the country come together. Desert Storm is a week long event with a boat show, poker run, and shoot out.

For more information on Desert Storm contact Lake Racer LLC at www.lakeracerllc.com or (602) 863-3713.



MAIN STREET

Main Street Events

Thursday Night Cruise on Main
Market on Main
Relics & Rods Car Show
London Bridge Days Parade
Boy Scouts Pancake Breakfast / Soap Box Derby
Fright Night
All American Festival Salsa & Chili Challenge
Holiday on Wheels Parade
New Years Eve Celebration

Fashion Week
Desert Storm
Patriot Days
Hot August Nights
Main Street Luau
Big Boy's Toys
Spring Wellness Festival
Havasu Classics Car Show
Winterfest

Main Street Association

1990 McCulloch Blvd. Ste D-201
Lake Havasu City, AZ 86403
Director: Roger Galloway
Phone: 928-201-6246
roger@lhcmainstreet.com
www.newlhcmainstreet.com



QUALITY OF LIFE

Weather

January	67.5
February	71.6
March	79.3
April	88.1
May	98
June	107
July	111.8
August	111
September	104.3
October	92.2
November	75.2
December	65.4
Average	89.2

Youth Sports

Boy Scouts / Girl Scouts
Havasu Stingray's Swim Team
Little League
Black Belt Academy
Lake Havasu Youth Soccer League
Gymnastics

Lake Havasu City hosts many local events. Please visit the links below to see the exciting happenings in the Lake Havasu area.

Convention & Visitors Bureau: www.golakehavasu.com

Lake Havasu Area Chamber of Commerce: www.havasuchamber.com

Lake Havasu Parks & Recreation: www.lhcaz.gov

Main Street: www.newlhcmainstreet.com

Havasu 95 Speedway: www.havasu95speedway.com

Grace Arts performing theatre: www.graceartslive.com

City Center Entertainment: www.citycenterentertainment.com



CONTACT INFORMATION



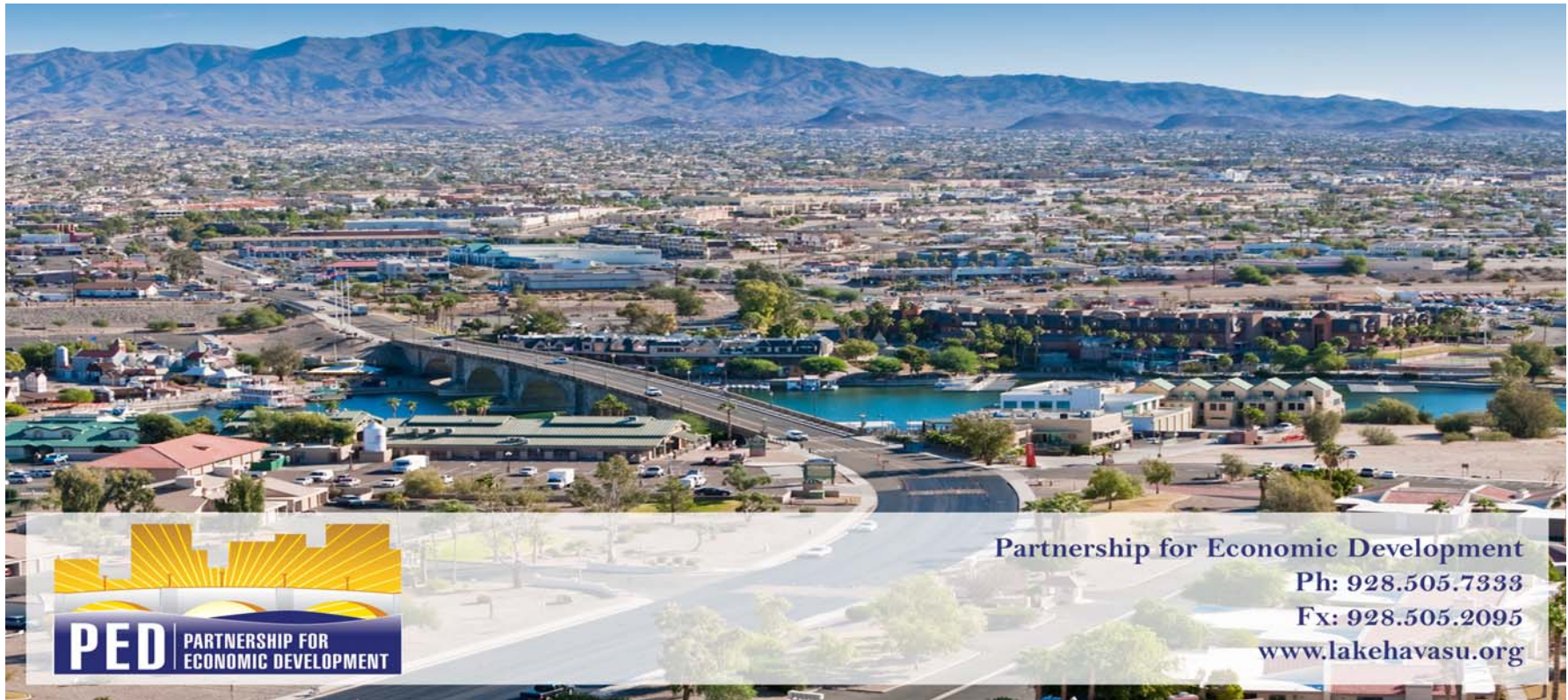
Gary Kellogg
President / CEO
gary.kellogg@lakehavasus.org



Shannon Worrell
Office Manager
sworrell@lakehavasus.org



James Gray
Marketing Director
james.gray@lakehavasus.org



Partnership for Economic Development
Ph: 928.505.7333
Fx: 928.505.2095
www.lakehavasus.org